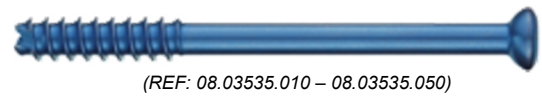
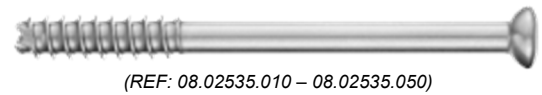
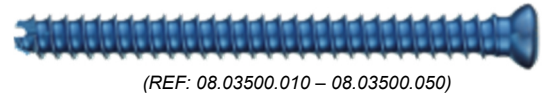
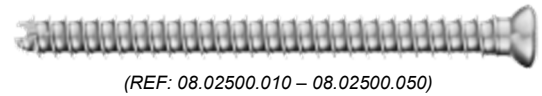


Cannulated Screws

Product Name: Cannulated Screw Ø 3.5
Manufacturer: Dieter Marquardt Medizintechnik GmbH
Medical Class: IIb

Screw diameter: 3.5 mm
Core diameter: 2.5 mm
Head diameter: 5.0 mm
Thread: short or full
Cannulation: 1.35 mm
Inner hexagon: 2.5 mm
Screw Length: 10 mm – 50mm
Material: Titanium Alloy (Ti6Al4V)
 Stainless Steel (1.4441)
Anodization: Type III (blue) for titanium



General description:

The screw can be used with stainless steel implants for screws Ø 2.7 mm and implants for some screws Ø 3.5 mm (for example: small T-plate, cloverleaf plate). Furthermore, the slim profile of the screw head for periarticular fractures is advantageous. Due to the beveled tip, the screw can be screwed in easier. The reverse cutting flutes facilitate removal. A hex driver allows the insertion of the screw into the bone.

Indication:

Fixation of small fragments of:

- carpus
- Metacarpal and metatarsal
- Area of distal tibia
- Forefoot
- Distal humerus

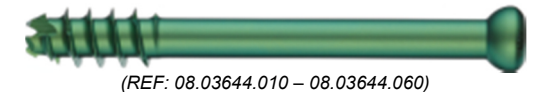
Also for

- osteochondral fractures
- Epiphyseal fractures in children
- Reattachment of ligaments

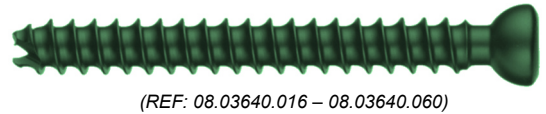
Article No. fully threaded		
Stainless steel	titanium	Length
08.02500.010	08.03500.010	L 10mm
08.02500.012	08.03500.012	L 12mm
08.02500.014	08.03500.014	L 14mm
08.02500.016	08.03500.016	L 16mm
08.02500.018	08.03500.018	L 18mm
08.02500.020	08.03500.020	L 20mm
08.02500.022	08.03500.022	L 22mm
08.02500.024	08.03500.024	L 24mm
08.02500.026	08.03500.026	L 26mm
08.02500.028	08.03500.028	L 28mm
08.02500.030	08.03500.030	L 30mm
08.02500.032	08.03500.032	L 32mm
08.02500.034	08.03500.034	L 34mm
08.02500.036	08.03500.036	L 36mm
08.02500.038	08.03500.038	L 38mm
08.02500.040	08.03500.040	L 40mm
08.02500.042	08.03500.042	L 42mm
08.02500.044	08.03500.044	L 44mm
08.02500.046	08.03500.046	L 46mm
08.02500.048	08.03500.048	L 48mm
08.02500.050	08.03500.050	L 50mm

Article No. short threaded		
Stainless steel	titanium	Length
08.02535.010	08.03535.010	L 10mm
08.02535.012	08.03535.012	L 12mm
08.02535.014	08.03535.014	L 14mm
08.02535.016	08.03535.016	L 16mm
08.02535.018	08.03535.018	L 18mm
08.02535.020	08.03535.020	L 20mm
08.02535.022	08.03535.022	L 22mm
08.02535.024	08.03535.024	L 24mm
08.02535.026	08.03535.026	L 26mm
08.02535.028	08.03535.028	L 28mm
08.02535.030	08.03535.030	L 30mm
08.02535.032	08.03535.032	L 32mm
08.02535.034	08.03535.034	L 34mm
08.02535.036	08.03535.036	L 36mm
08.02535.038	08.03535.038	L 38mm
08.02535.040	08.03535.040	L 40mm
08.02535.042	08.03535.042	L 42mm
08.02535.044	08.03535.044	L 44mm
08.02535.046	08.03535.046	L 46mm
08.02535.048	08.03535.048	L 48mm
08.02535.050	08.03535.050	L 50mm

Product Name: *Cannulated Screw Ø 4.0*
Manufacturer: Dieter Marquardt Medizintechnik GmbH
Medical Class: IIb



Screw diameter: 4.0 mm
Core diameter: 2.35 mm
Head diameter: 5.0 mm
Thread: short or full
Cannulation: 1.35 mm
Inner hexagon: 2.5 mm
Screw Length: 10mm – 60mm / 16 mm – 60mm
Material: Titanium Alloy (Ti6Al4V)
Anodization: Type III (green)



General description:

The Ø 4.0 mm cannulated screw is used for fixation of small fragments. The low profile of the screw head is advantageous for periarticular fractures. Due to the beveled tip, the screw can be screwed in easier. The reverse cutting flutes facilitate removal. A hex driver allows the insertion of the screw into the bone.

Indication:

Fixation of small fragments of:

- carpus
- Metacarpal and metatarsal
- Area of distal tibia
- Forefoot
- Distal humerus

Also for

- osteochondral fractures
- Epiphyseal fractures in children
- Reattachment of ligaments

Article No.	Short thread	Fully threaded	Length
08.03644.010		08.03640.010	L 10mm
08.03644.012		08.03640.012	L 12mm
08.03644.014		08.03640.014	L 14mm
08.03644.016		08.03640.016	L 16mm
08.03644.018		08.03640.018	L 18mm
08.03644.020		08.03640.020	L 20mm
08.03644.022		08.03640.022	L 22mm
08.03644.024		08.03640.024	L 24mm
08.03644.026		08.03640.026	L 26mm
08.03644.028		08.03640.028	L 28mm
08.03644.030		08.03640.030	L 30mm
08.03644.032		08.03640.032	L 32mm
08.03644.034		08.03640.034	L 34mm
08.03644.036		08.03640.036	L 36mm
08.03644.038		08.03640.038	L 38mm
08.03644.040		08.03640.040	L 40mm
08.03644.042		08.03640.042	L 42mm
08.03644.044		08.03640.044	L 44mm
08.03644.046		08.03640.046	L 46mm
08.03644.048		08.03640.048	L 48mm
08.03644.050		08.03640.050	L 50mm
08.03644.055		08.03640.055	L 55mm
08.03644.060		08.03640.060	L 60mm

Product Name: *Cannulated Screw Ø 4.5*
Manufacturer: Dieter Marquardt Medizintechnik GmbH
Medical Class: IIb

Screw diameter: 4.5 mm
Core diameter: 3.2 mm
Head diameter: 6.5 mm
Thread: short or full
Cannulation: 1.75 mm
Inner hexagon: 3.5 mm
Screw Length: 20 mm – 72mm
Material: Titanium Alloy (Ti6Al4V)
 Stainless Steel (1.4441)
Anodization: Type III (red) for titanium



(REF: 08.02650.020 – 08.02650.072)



(REF: 08.02654.020 – 08.02654.072)



(REF: 08.03650.020 – 08.03650.072)



(REF: 08.03654.020 – 08.03654.072)

General description:

The screw is self-tapping and has reverse cutting flutes to facilitate screw removal. The head has a hexagon socket. The cannulated screw 4.5 mm is mainly used in fractures of ankle, fractures of the proximal and distal humerus, patella fractures and talar and Calcaneus fractures.

Indication:

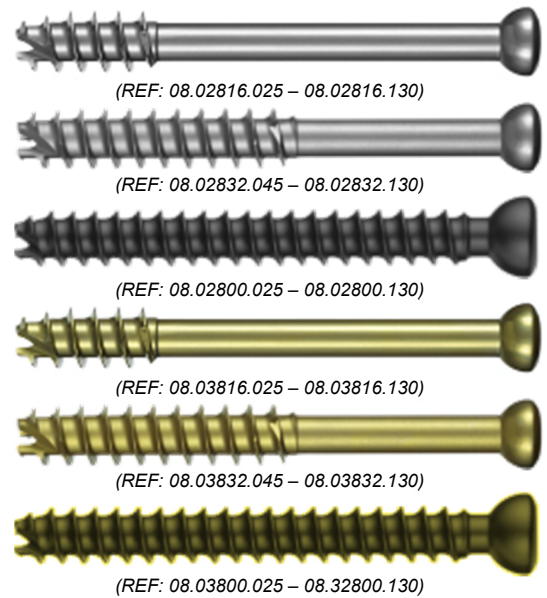
Fixation of bone fragments at metaphyseal area of:

- Fractures of ankle
- Fractures of distal and proximal humerus
- Patella fractures
- Fractures of Talus and Calcaneus
- Certain fractures of pelvic, acetabulum or tibial plateau

Ø 4.5mm, fully threaded			Ø 4.5mm, short thread			
Stainless steel	titanium	Length	Stainless steel	titanium	Length	Thread length
08.02650.020	08.03650.020	L 20mm	08.02654.020	08.03654.020	L 20mm	7 mm
08.02650.022	08.03650.022	L 22mm	08.02654.022	08.03654.022	L 22mm	7 mm
08.02650.024	08.03650.024	L 24mm	08.02654.024	08.03654.024	L 24mm	8 mm
08.02650.026	08.03650.026	L 26mm	08.02654.026	08.03654.026	L 26mm	9 mm
08.02650.028	08.03650.028	L 28mm	08.02654.028	08.03654.028	L 28mm	9 mm
08.02650.030	08.03650.030	L 30mm	08.02654.030	08.03654.030	L 30mm	10 mm
08.02650.032	08.03650.032	L 32mm	08.02654.032	08.03654.032	L 32mm	11 mm
08.02650.034	08.03650.034	L 34mm	08.02654.034	08.03654.034	L 34mm	11 mm
08.02650.036	08.03650.036	L 36mm	08.02654.036	08.03654.036	L 36mm	12 mm
08.02650.038	08.03650.038	L 38mm	08.02654.038	08.03654.038	L 38mm	13 mm
08.02650.040	08.03650.040	L 40mm	08.02654.040	08.03654.040	L 40mm	13 mm
08.02650.042	08.03650.042	L 42mm	08.02654.042	08.03654.042	L 42mm	14 mm
08.02650.044	08.03650.044	L 44mm	08.02654.044	08.03654.044	L 44mm	15 mm
08.02650.046	08.03650.046	L 46mm	08.02654.046	08.03654.046	L 46mm	15 mm
08.02650.048	08.03650.048	L 48mm	08.02654.048	08.03654.048	L 48mm	16 mm
08.02650.050	08.03650.050	L 50mm	08.02654.050	08.03654.050	L 50mm	17 mm
08.02650.052	08.03650.052	L 52mm	08.02654.052	08.03654.052	L 52mm	17 mm
08.02650.054	08.03650.054	L 54mm	08.02654.054	08.03654.054	L 54mm	18 mm
08.02650.056	08.03650.056	L 56mm	08.02654.056	08.03654.056	L 56mm	19 mm
08.02650.060	08.03650.060	L 60mm	08.02654.060	08.03654.060	L 60mm	20 mm
08.02650.064	08.03650.064	L 64mm	08.02654.064	08.03654.064	L 64mm	21 mm
08.02650.068	08.03650.068	L 68mm	08.02654.068	08.03654.068	L 68mm	23 mm
08.02650.072	08.03650.072	L 72mm	08.02654.072	08.03654.072	L 72mm	24 mm

Product Name: *Cannulated Screw Ø 7.0*
Manufacturer: Dieter Marquardt Medizintechnik GmbH
Medical Class: IIb

Screw diameter: 7.0 mm
Core diameter: 4.5 mm
Head diameter: 8.0 mm
Thread: 16mm / 32mm / fully
Cannulation: 2.2 mm
Inner hexagon: 3.5 mm
Screw Length: 25 mm – 130mm / 45mm – 130mm
Material: Titanium Alloy (Ti6Al4V)
 Stainless Steel (1.4441)
Anodization: Type III (gold) for titanium



General description:

There are three different types of screws. A type with 16 mm thread length, a 32 mm thread length and with a continuous thread. The screw is self-tapping and has reverse cutting flutes to facilitate screw removal. The screw is inserted with a hexagon screwdriver.

Indication:

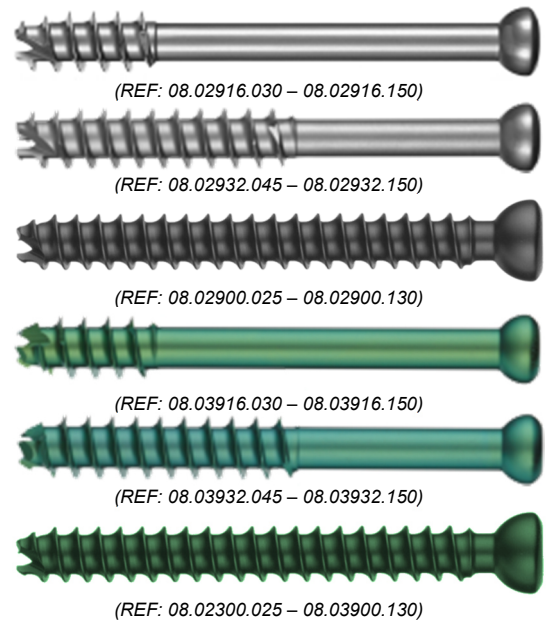
As lag screw for fractures with large metaphyseal or epiphyseal fragments

- Intra-capsular fractures of the pelvic
- Fractures of the tibial plateau
- Intra-condylar fractures of distal femur
- Femoral neck fractures
- Depressed loosening of the epiphysis of the femoral head
- Ankle arthrodesis
- Rupture of the iliosacral joint

Ø 7.0mm, fully threaded		Ø 7.0mm, 16mm thread		Ø 7.0mm, 32mm thread		Length
Stainless steel	titanium	Stainless steel	titanium	Stainless steel	titanium	
08.02800.025	08.03800.025	08.02816.025	08.03816.025			L 25mm
08.02800.030	08.03800.030	08.02816.030	08.03816.030			L 30mm
08.02800.035	08.03800.035	08.02816.035	08.03816.035			L 35mm
08.02800.040	08.03800.040	08.02816.040	08.03816.040			L 40mm
08.02800.045	08.03800.045	08.02816.045	08.03816.045	08.02832.045	08.03832.045	L 45mm
08.02800.050	08.03800.050	08.02816.050	08.03816.050	08.02832.050	08.03832.050	L 50mm
08.02800.055	08.03800.055	08.02816.055	08.03816.055	08.02832.055	08.03832.055	L 55mm
08.02800.060	08.03800.060	08.02816.060	08.03816.060	08.02832.060	08.03832.060	L 60mm
08.02800.065	08.03800.065	08.02816.065	08.03816.065	08.02832.065	08.03832.065	L 65mm
08.02800.070	08.03800.070	08.02816.070	08.03816.070	08.02832.070	08.03832.070	L 70mm
08.02800.075	08.03800.075	08.02816.075	08.03816.075	08.02832.075	08.03832.075	L 75mm
08.02800.080	08.03800.080	08.02816.080	08.03816.080	08.02832.080	08.03832.080	L 80mm
08.02800.085	08.03800.085	08.02816.085	08.03816.085	08.02832.085	08.03832.085	L 85mm
08.02800.090	08.03800.090	08.02816.090	08.03816.090	08.02832.090	08.03832.090	L 90mm
08.02800.095	08.03800.095	08.02816.095	08.03816.095	08.02832.095	08.03832.095	L 95mm
08.02800.100	08.03800.100	08.02816.100	08.03816.100	08.02832.100	08.03832.100	L 100mm
08.02800.105	08.03800.105	08.02816.105	08.03816.105	08.02832.105	08.03832.105	L 105mm
08.02800.110	08.03800.110	08.02816.110	08.03816.110	08.02832.110	08.03832.110	L 110mm
08.02800.115	08.03800.115	08.02816.115	08.03816.115	08.02832.115	08.03832.115	L 115mm
08.02800.120	08.03800.120	08.02816.120	08.03816.120	08.02832.120	08.03832.120	L 120mm
08.02800.125	08.03800.125	08.02816.125	08.03816.125	08.02832.125	08.03832.125	L 125mm
08.02800.130	08.03800.130	08.02816.130	08.03816.130	08.02832.130	08.03832.130	L 130mm

Product Name: *Cannulated Screw Ø 7.3*
Manufacturer: Dieter Marquardt Medizintechnik GmbH
Medical Class: IIb

Screw diameter: 7.3 mm
Core diameter: 4.8 mm
Head diameter: 8.0 mm
Thread: 16mm / 32mm
Cannulation: 2.9 mm
Inner hexagon: 3.5 mm
Screw Length: 30 mm – 150mm / 45mm – 150mm
Material: Titanium Alloy (Ti6Al4V)
 Stainless Steel (1.4441)
Anodization: Type III (green) for titanium



General description:

There are three different types of screws. A type with 16 mm thread length, a 32 mm thread length and with a continuous thread. The screw is self-tapping and has reverse cutting flutes to facilitate screw removal. The screw is inserted with a hexagon screwdriver.

Indication:

As lag screw for fractures with large metaphyseal or epiphyseal fragments

- Intra-capsular fractures of the pelvic
- Fractures of the tibial plateau
- Intra-condylar fractures of distal femur
- Femoral neck fractures
- Depressed loosening of the epiphysis of the femoral head
- Ankle arthrodesis
- Rupture of the iliosacral joint

Ø 7.3mm, fully threaded		Ø 7.3mm, 16mm thread		Ø 7.3mm, 32mm thread		Length
Stainless steel	titanium	Stainless steel	titanium	Stainless steel	titanium	
08.02900.025	08.03900.025					L 25mm
08.02900.030	08.03900.030	08.02916.030	08.03916.030			L 30mm
08.02900.035	08.03900.035	08.02916.035	08.03916.035			L 35mm
08.02900.040	08.03900.040	08.02916.040	08.03916.040			L 40mm
08.02900.045	08.03900.045	08.02916.045	08.03916.045	08.02932.045	08.03932.045	L 45mm
08.02900.050	08.03900.050	08.02916.050	08.03916.050	08.02932.050	08.03932.050	L 50mm
08.02900.055	08.03900.055	08.02916.055	08.03916.055	08.02932.055	08.03932.055	L 55mm
08.02900.060	08.03900.060	08.02916.060	08.03916.060	08.02932.060	08.03932.060	L 60mm
08.02900.065	08.03900.065	08.02916.065	08.03916.065	08.02932.065	08.03932.065	L 65mm
08.02900.070	08.03900.070	08.02916.070	08.03916.070	08.02932.070	08.03932.070	L 70mm
08.02900.075	08.03900.075	08.02916.075	08.03916.075	08.02932.075	08.03932.075	L 75mm
08.02900.080	08.03900.080	08.02916.080	08.03916.080	08.02932.080	08.03932.080	L 80mm
08.02900.085	08.03900.085	08.02916.085	08.03916.085	08.02932.085	08.03932.085	L 85mm
08.02900.090	08.03900.090	08.02916.090	08.03916.090	08.02932.090	08.03932.090	L 90mm
08.02900.095	08.03900.095	08.02916.095	08.03916.095	08.02932.095	08.03932.095	L 95mm
08.02900.100	08.03900.100	08.02916.100	08.03916.100	08.02932.100	08.03932.100	L 100mm
08.02900.105	08.03900.105	08.02916.105	08.03916.105	08.02932.105	08.03932.105	L 105mm
08.02900.110	08.03900.110	08.02916.110	08.03916.110	08.02932.110	08.03932.110	L 110mm
08.02900.115	08.03900.115	08.02916.115	08.03916.115	08.02932.115	08.03932.115	L 115mm
08.02900.120	08.03900.120	08.02916.120	08.03916.120	08.02932.120	08.03932.120	L 120mm
08.02900.125	08.03900.125	08.02916.125	08.03916.125	08.02932.125	08.03932.125	L 125mm
08.02900.130	08.03900.130	08.02916.130	08.03916.130	08.02932.130	08.03932.130	L 130mm
		08.02916.135	08.03916.135	08.02932.135	08.03932.135	L 135mm
		08.02916.140	08.03916.140	08.02932.140	08.03932.140	L 140mm
		08.02916.145	08.03916.145	08.02932.145	08.03932.145	L 145mm
		08.02916.150	08.03916.150	08.02932.150	08.03932.150	L 150mm

Washer

Product Name: Washer
Manufacturer: Dieter Marquardt Medizintechnik GmbH
Medical Class: IIb



Outer diameter: 13mm
Thickness: 1.5mm
Material: Titanium Alloy (Ti6Al4V)
 Stainless Steel (1.4441)

Anodization: Type III (gold) for titanium

Indication:

Prevent the head of a screw split the cortex and sinks into the bone

Ø 13.0	
Stainless steel	titanium
08.90000.100	08.91000.100